



# GMT MONTHLY MEMBERSHIP PROGRESS REPORT

Results as of: 3/31/2024

Multiple District 109

LOCATION: ICELAND

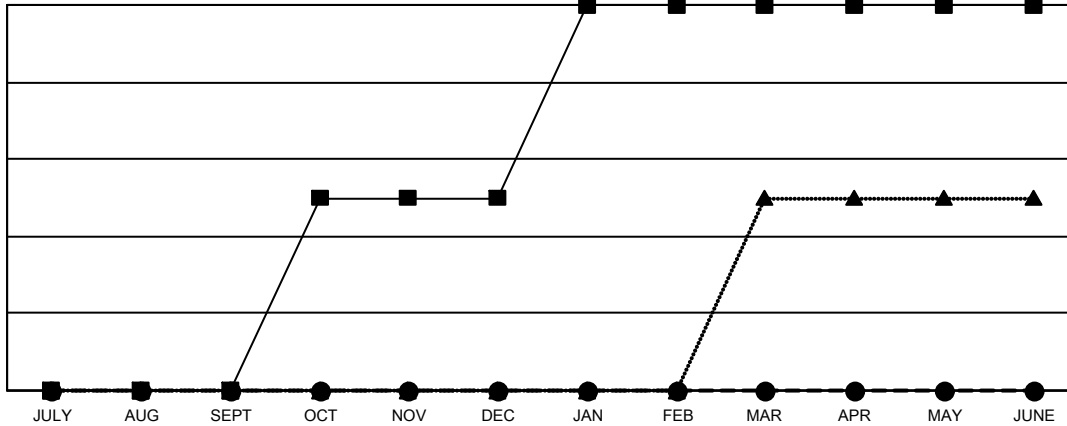
GMT: OPEN

GMT CA 4

Clubs			
RESULTS FOR 2023-2024			
QUARTER	NEW CLUB GOAL	NEW CLUBS	DROPPED CLUBS
JULY/AUG/SEPT	0	0	3
OCT/NOV/DEC	1	0	1
JAN/FEB/MAR	1	0	2
APR/MAY/JUNE	0	0	0

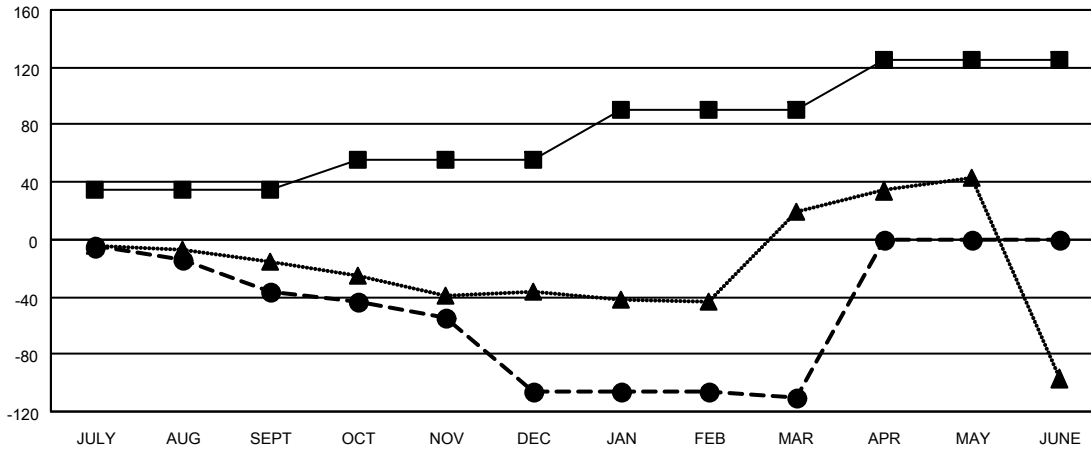
Members			
RESULTS FOR 2023-2024			
QUARTER	MEMBER GROWTH NET GOAL	MEMBER GROWTH ACTUAL	DROPPED MEMBERS ACTUAL (including transfers)
JULY/AUG/SEPT	35	7	43
OCT/NOV/DEC	20	28	94
JAN/FEB/MAR	35	30	31
APR/MAY/JUNE	35	0	0

GOALS AND ACTUAL NEW CLUBS CUMULATIVE



- - CURRENT YEAR GOALS FOR NEW CLUBS
- - CURRENT YEAR ACTUAL NEW CLUBS
- ▲ - LAST YEAR ACTUAL NEW CLUBS

GOALS AND ACTUAL MEMBERS CUMULATIVE



- - MEMBER GROWTH NET GOAL
- - MEMBER GROWTH ACTUAL
- ▲ - LAST YEAR MEMBERSHIP ACTUAL

DROPPED CLUBS: 6	
<b>DROPPED MEMBERS</b>	
DECEASED	27
CLUB CANCELLED	0
OTHER	141
<b>TOTAL</b>	<b>168</b>

27 CLUBS OF 82 ADDED 1 OR MORE NEW MEMBERS

GENDER DISTRIBUTION	
MALE	1,279 (72.46%)
FEMALE	486 (27.54%)

[CLICK HERE FOR CUMULATIVE MEMBERSHIP DATA](#)

TOTAL FAMILY UNIT MEMBERS	14
FAMILY MEMBERS PAYING HALF DUES	7